

Skippack, PA

PROFESSIONAL OFFICES

SUBLEASE

Ideal for law firm, accountant,

Or other service providers

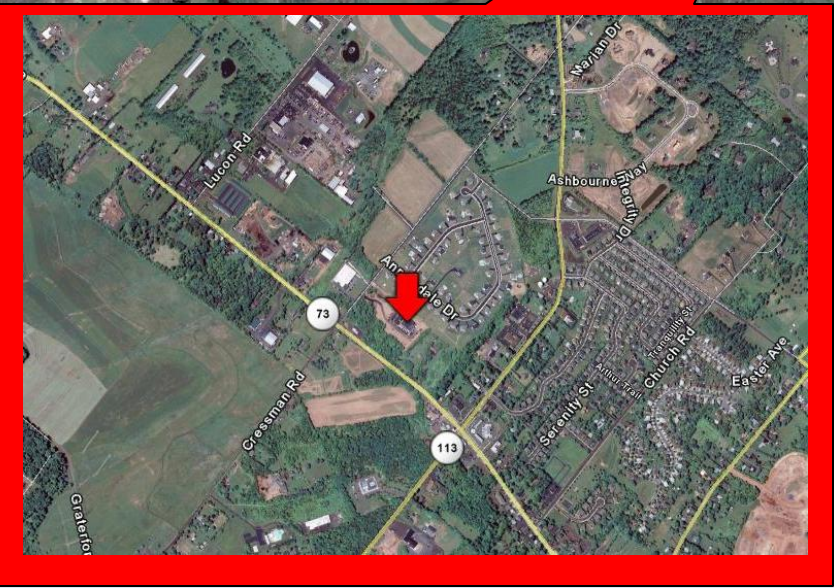
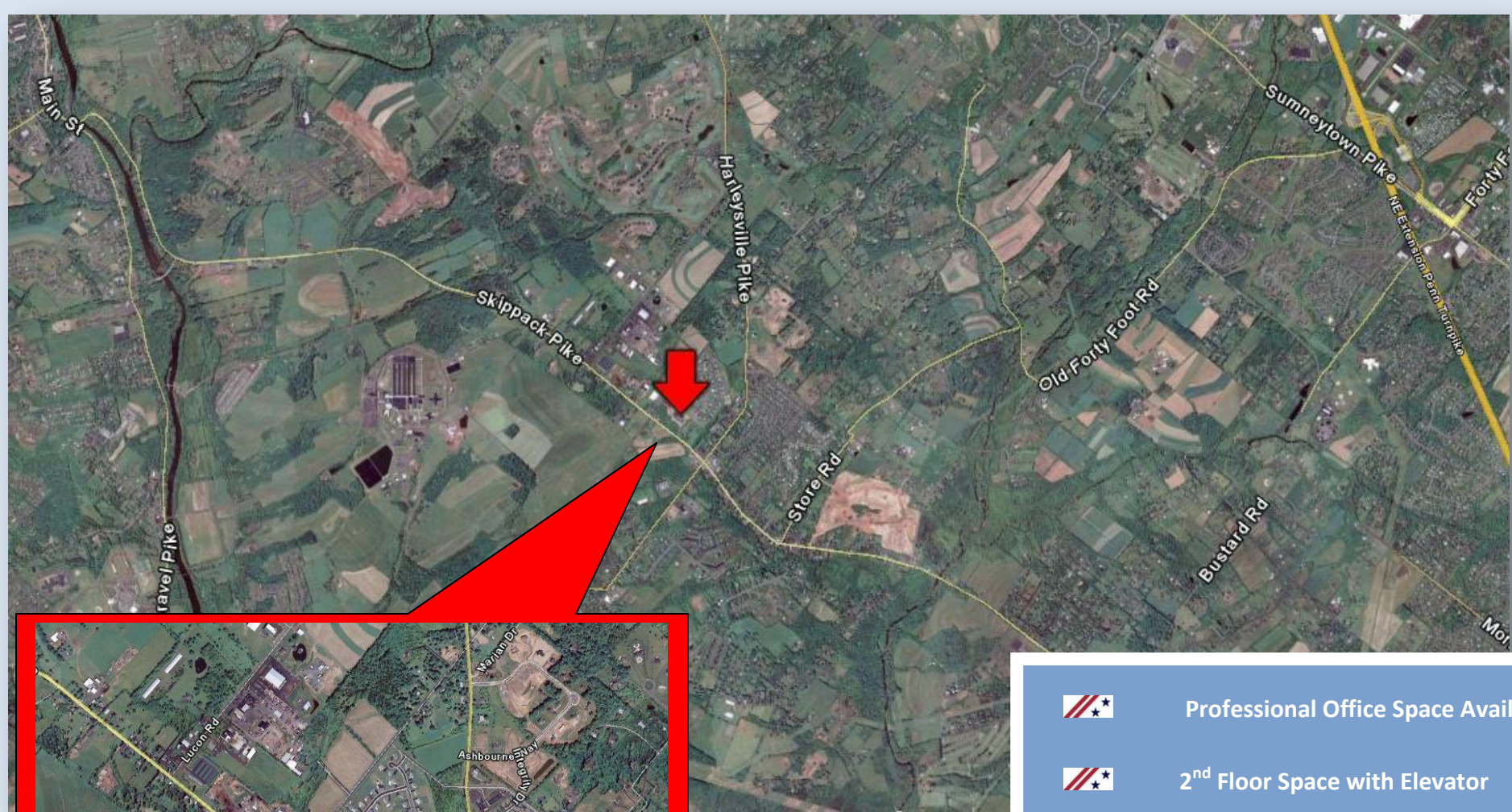
Ample parking



For more information call: 610-630-3700

Matt Bergin

[mbergin@continentalrealty.com](mailto:mbergin@continentalrealty.com)



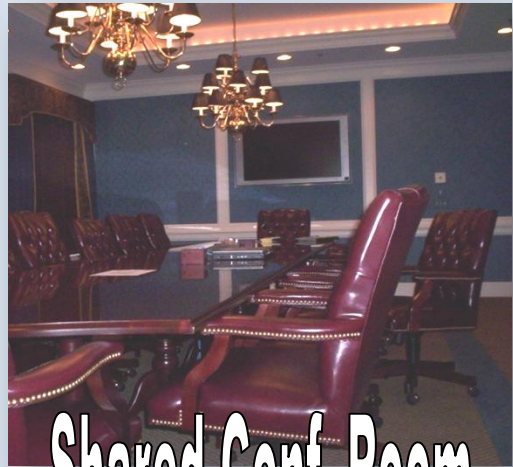
-  Professional Office Space Available
-  2<sup>nd</sup> Floor Space with Elevator
-  Shared Conference room & reception area
-  Possible room to expand
-  NEW - Class "A" Space



For more information call: **610-630-3700**  
Matt Bergin  
[mbergin@continentalrealty.com](mailto:mbergin@continentalrealty.com)



Space for Lease



Shared Conf. Room



Entrance way & Vestibule



For more information call: 610-630-3700

Matt Bergin

[mbergin@continentalrealty.com](mailto:mbergin@continentalrealty.com)