

Norristown

PAD SITES AVAILABLE

For SALE/LEASE

**Located in Enterprise Zone
Great for Banks, Fast Food,
or similar uses**



For more information call:

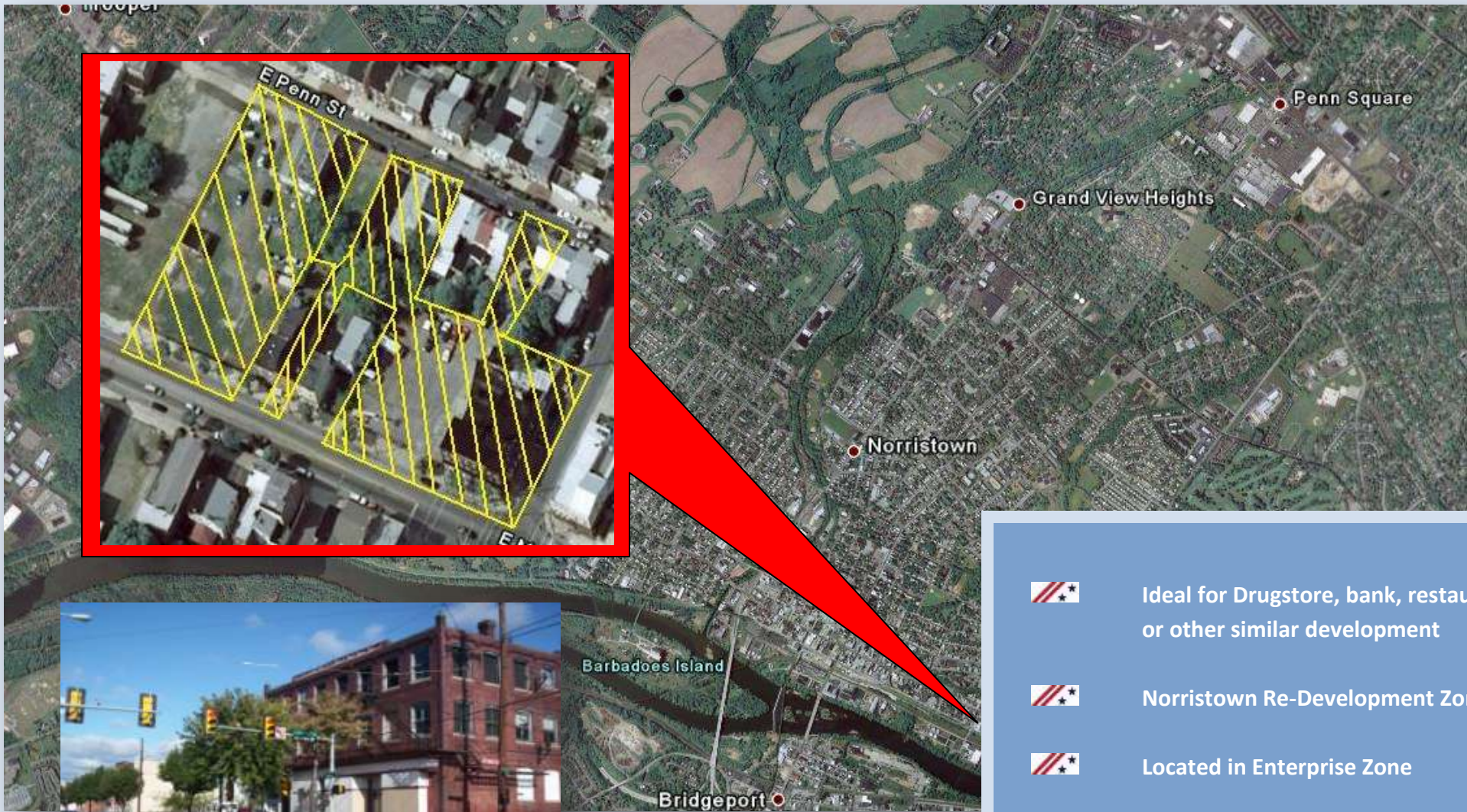
Matt Bergin

mbergin@continentalrealty.com

610-630-3700

Joseph Tarantino

jtarrantino@continentalrealty.com



-  Ideal for Drugstore, bank, restaurant, or other similar development
-  Norristown Re-Development Zone
-  Located in Enterprise Zone
-  Own almost a whole city block!
-  Incentives available

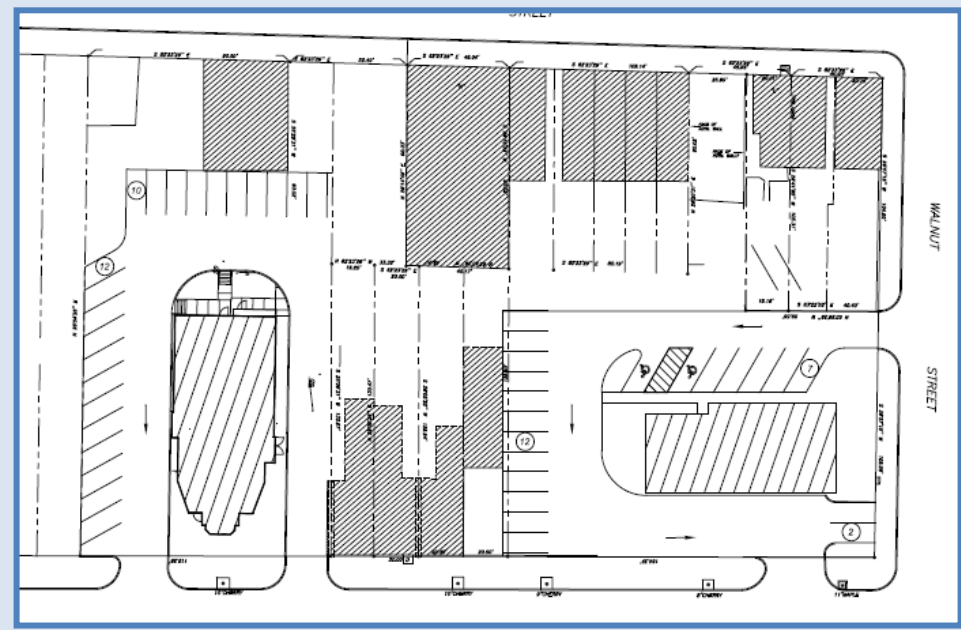
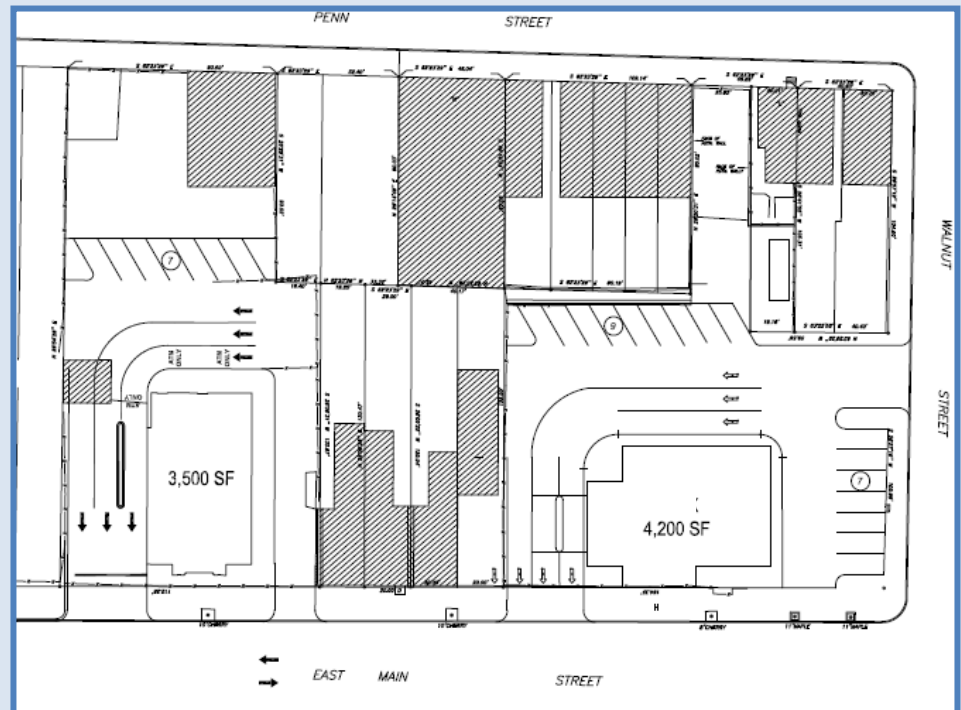


For more information call:
Matt Bergin
mbergin@continentalrealty.com

610-630-3700
Joseph Tarantino
jtarrantino@continentalrealty.com

DEMOGRAPHICS

	1 Mile	3 Miles	5 Miles
2008 Total Adult Population	18,262	73,450	138,977
2008 Total Daytime Population	20,578	91,101	197,740
2008 Total Daytime Work Population	10,470	52,420	121,777
2008 Total Population	23,814	90,494	172,184
2008 Total Households	9,591	39,015	71,543
2008 Average Household Income	\$70,857	\$77,102	\$98,129
2008 Children/Infants Clothing Stores	\$3,589,150	\$14,043,505	\$28,670,609
2008 Jewelry Stores	\$2,735,414	\$10,798,602	\$21,374,667
2008 Mens Clothing Stores	\$5,928,572	\$23,689,500	\$47,447,057
2008 Shoe Stores	\$5,253,368	\$20,635,399	\$42,462,774
2008 Womens Clothing Stores	\$11,071,442	\$44,209,562	\$88,188,239
2008 Beer/Wine/Liquor Stores	\$3,975,652	\$15,655,319	\$31,988,329
2008 Convenience/Specialty Food Stores	\$14,114,075	\$62,747,685	\$141,030,456
2008 Restaurant Expenditures	\$57,742,225	\$313,010,634	\$749,238,258
2008 Supermarkets/Other Grocery excl Conv	\$47,477,033	\$187,394,869	\$375,357,754
2008 Furniture Stores	\$6,685,172	\$26,310,198	\$52,451,435
2008 Home Furnishings Stores	\$4,284,344	\$17,169,832	\$34,963,023
2008 Gen Merch/Appliance/Furniture Stores	\$60,736,363	\$240,626,979	\$481,080,809
2008 Gasoline Stations w/ Convenience Stores	\$47,993,662	\$201,151,486	\$417,697,030
2008 General Merchandise Stores	\$54,051,194	\$214,316,783	\$428,629,373
2008 Other Health/Personal Care Stores	\$4,440,534	\$17,460,155	\$34,065,536
2008 Pharmacies/Drug Stores	\$23,135,520	\$91,672,549	\$182,052,982
2008 Pet/Pet Supplies Stores	\$3,411,454	\$13,444,045	\$27,139,095
2008 Book/Periodical/Music Stores	\$1,753,339	\$7,412,749	\$14,617,643
2008 Hobby/Toy/Game Stores	\$1,544,367	\$6,117,200	\$10,596,858
2008 Musical Instrument/Supplies Stores	\$591,694	\$2,303,218	\$4,566,890



For more information call:
Matt Bergin
mbergin@continentalrealty.com

610-630-3700
Joseph Tarantino
jtarrantino@continentalrealty.com