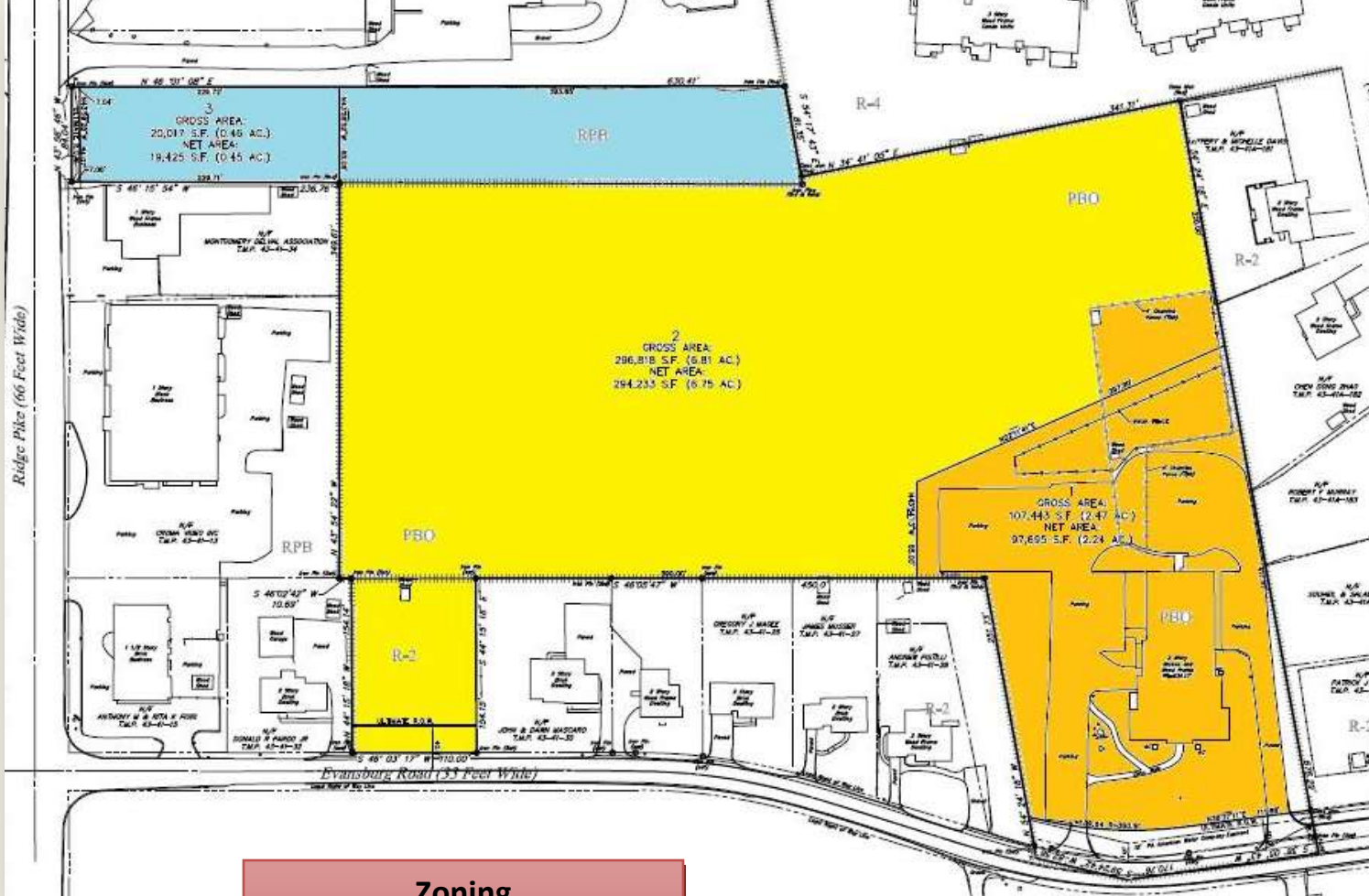


# LAND in Central Montgomery County

- 6.81 Acres
- Access to Ridge Pike
- Public W&S
- Endless Opportunities
- Priced to SELL!
- Additional Acreage (2.47) Available



**Zoning**  
**YELLOW – PBO**  
**BLUE – RPB**  
 (ORANGE is additional 2.47 acres of PBO, also available)



**Continental Realty**  
 Serving Chester, Montgomery, Delaware and Bucks Counties

Call: **Matt Bergin** or **Robert "Jason" Wright**  
 610-630-3700  
[mbergin@continentalrealty.com](mailto:mbergin@continentalrealty.com) or [rwright@continentalrealty.com](mailto:rwright@continentalrealty.com)